

Test your resilience and join us to enjoy 4 unique challenges, each with their own exciting outcome.



We look forward to seeing you.



Swanland Primary School is a great location for hands-on exploration

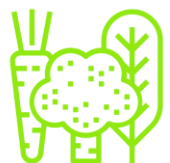
Updated COVID-19 Risk Assessments
SMALL GROUPS in an indoor and outdoor setting

Swanland After School

Monday 28 Sep & 5, 12, 19 Oct
15.30 - 17.00

Unique, small group after school sessions for children, aged 5-12 years.

Swanland Primary School,
Tranby Lane, Swanland, HU14 3NE



Children Who Can

To book visit:

<https://www.childrenwhocan.co.uk/workshop-events/>

Crafting Colourful decors, creating edible art, making a wooden Frankenstein and sock monkeys and designing rustic pumpkins.