



www.swanlandeducationtrust.co.uk

PTA Newsletter



Swanland School
PTA
PARENT TEACHER ASSOCIATION

May 2018

Hello!

April brought lots of behind the scene organising along with work on the exciting new venture "Costume Closet" and a Bag2School collection.

We still have 2 classes without a PTA Class Rep. **5SM** and **5ND/RC**

If you are interested in being the "go to person" for either of these classes, please contact monicajwilliams@hotmail.com

May looks to be a busy month with another PTA first ... **Family Bingo Night!** Hope to see you there!

Upcoming PTA Dates

May

- 8/10/11th- Nearly New Uniform Sales
- 11th - Family Bingo Night 6.30pm
- 14th - Father's Day gift orders due in
- 15th - PTA Meeting 7pm
- 25th - Spring Walk Refreshments

June

- 6th - KS2 Sports Day Refreshments
- 12th - PTA Meeting 7pm
- 14th - Swanland Has Talent 6.30pm
- 18th - KS1 Sports Day Refreshments

July

- 3rd - Reception Sports Day Refreshments
- 6th - Summer Fundraiser

Fundraising UPDATE!

Bag2School **£145.20**

Costume Closet Donations:



The Costume Closet got off to a slow start with the playground collections. We are putting this down to the wet weather as we have had such positive feedback on this new venture.

Items are slowly being donated (thank you) and photographing/cataloging the items has begun.

The finer details are being discussed and hopefully we will have something for you soon.

PLEASE KEEP THE DONATIONS COMING!



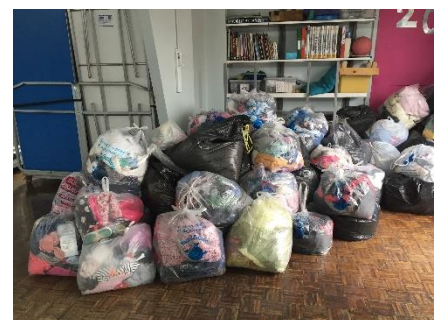
Bag2School



The bag2school collection went on time. Thank you to everyone who had a clear out and brought a bag (or two).

Together we raised **£145.20!**

The new curbside drop off seemed to be appreciated and went without a hitch so will be offered at each Bag2School collection from now on.



THIS MONTH:

Nearly New Uniform Sales

8/10/11th May

Suzanne will be opening up the Nearly New Uniform Sales again during the month of May.

The 8th May will be at the Reception Sept 2018 new intake meeting starting at 2.15pm.

The 10/11th May will run alongside the Book Fayre between 3-4pm.

ANY DONATIONS OF GOOD QUALITY UNIFORM TO REPLENISH OUR STOCK WOULD BE VERY MUCH APPROCATED – we are low on branded polo's, sweatshirts, cardigans, coats and jackets that have the Swanland logo..

Family Bingo Night

Friday 11th May at 6.30pm



On Friday 11th May, the PTA will be hosting a Bingo Night at Swanland Primary School!

The event will take place in the Great Hall and there will be pizza snacks, if you're a bit peckish, and both soft and alcoholic drinks available to buy.

Parents, friends and family are all welcome!

Doors will open at 6.15 pm for a 6.30 pm start and it is expected that the evening will finish around 9.00 pm.

Entry is by ticket only and tickets (Adult: £5.00 and Children: £3.00) are available from the School Office (entry for pre-school age children is free). The ticket price includes one book of Bingo cards for all 10 games and there will be prizes for the winners! So, eyes down!

Please come and support this fun, family night out, with proceeds going towards funding for the children, including educational workshops, tablets and many other great projects.

We have limited places so don't delay!



Father's Day Gifts

Monday 14th May

JUNE 17TH is FATHER'S DAY!

After the success of our personalised Mother's Day gifts, the PTA has organised for your child's artwork to be printed onto mugs, water bottles, and/or coasters for Father's Day. These make the perfect gift for dads, granddads, uncles or carers.

Order forms have been sent out (please note there are two separate order forms: one for mugs and water bottles and a different one for coasters). Your child may design their unique gift on the top half of the form – the more creative the better!

How about a portrait of the person for whom you child is making the gift? Or a drawing of the full family with a special message?

More forms are available from the school office, should you wish to make different designs for different people.

Please ensure payment (cash or cheque) is sent to school together with your order form(s) by Monday 14th May at the latest.

Please make cheques payable to 'Swanland Primary School'.

Thank you for your continuing support, now and into the future.



PTA Meeting

Tuesday 15th May at 7pm

All members of the association - parents, carers and staff are invited to attend.

This is the time to discuss current and upcoming events.



Spring Walk Refreshments

Friday 25th May from 10.30am

The annual sponsored Spring Walk will take place this year on Friday 25th May during school time.

The PTA will be selling refreshments for purchase at the end of the walk.

We look forward to seeing you there!

UPCOMING:

Plans are coming together on the following events:

Sports Day Refreshments

Drinks and crisps will be for sale.

Swanland has Talent

Plans are being put into place for this evening of entertainment. Judges are being asked, trophies are being ordered. We will need volunteers to serve drinks.

Summer Fundraiser

Our annual BBQ arrangements are under way. The main change this year is the venue ... it will be on the school playing fields, NOT at the farm.

Does anyone have connections with regards to canopies and gazebos we can borrow please.



8th, 10th & 11th May

Nearly New Uniform Sales

Help needed to set up, sell, pack away 11th May

Family Bingo Night

Various help needed between 5.45-9.30pm (approximately)

25th May

Spring Walk Refreshments

Help needed to set up, sell, pack away

Sign Up Genius is our sign up aid.
Group organising made easy.

If you can help at any of the above, please click on this link:

www.SignUpGenius.com/go/508oA4BAAA82AA7FDo-upcoming

The more helpers, the less time needed from you.

Miscellaneous Dates

7 May	Early May Bank Holiday
9 May	National Teachers' Day UK
19 May	Royal Wedding
28 May	Spring Bank Holiday

ARE YOU A BUSINESS OWNER?

If so, this could be for you!

Can you or do you know of anyone who could support our children's learning and growth.

Some donate their merchandise or valuable services; others donate their expertise in a particular area.

We would be very grateful for any offers of help with our current school projects.

We are currently looking for:

- ❖ a builder to quote on a couple of construction jobs.
- ❖ Someone to cost/fit internal bi-fold doors (as part of a funding application)
- ❖ a glazier to fix/replace windows
- ❖ window blinds for the small hall - do any parents have connections with regards to purchasing/installing new blinds?
- ❖ Any joiners to help with the redesign our School Library

CAN YOU HELP?

Please contact the school office.



Swanland School PTA

We have created a group on Facebook, **currently we have 135 members!**

It is a 'closed' group, which means that anyone can find the group and see who's in it but only members can see the posts.

You have to request to join it and PTA admin has to 'accept' your request. This way we can ensure that **only people linked to our school can become members.**

This Facebook group is to help build community among Swanland School PTA and parents. By joining this online group, it will give you an immediate connection to the PTA, allowing you to pass on ideas to support our school, offer your time or services to the PTA, share ideas, view upcoming events etc.

Please find us on Facebook and press 'Join Group'

Make purchases while raising money for Swanland School



Co-Op North Ferriby!

PLEASE NOMINATE SWANLAND AS YOUR CHOSEN CAUSE!

The funding period has started and lasts until October 2018.

We, along with 2 other local causes, will receive a share of the funds raised from carrier bag sales and also a share of the members fund.

Please choose our school as your chosen cause otherwise the money is equally split between the 3 charities.


Please make sure you have a Co-Op membership card, use it every time you shop there and the school receive 1% of your spend.

As per one committee member said – "it feels like guilt free shopping!"

Micro Scooters

www.micro-scooters.co.uk

Scooter Aid

Is a scheme run by Micro Scooters  they donate revamped, old, or unwanted scooters to groups that could benefit from them.

We were very lucky to receive 5 new scooters for the reception playground at the beginning of term. We would like to thank the staff from Micro Scooter for choosing our school and making our children extremely happy.

Looking to buy a Scooter? Tel: 0333 320 1030

If you buy a Micro Scooter, **they will give Swanland School 10%** from any purchases. Our unique code is 137151 please insert this on checkout.

The Giving Machine

www.thegivingmachine.co.uk

This a great way for us to fundraise. It's  so easy and it costs you nothing!

All you have to do is register at the givingmachine.co.uk website under 'Swanland Primary School', then just shop online as normal.

With over 790 shops to choose from, including your weekly groceries, holidays and everything in between, it's a fantastic opportunity to do something great for our children.

Link to your favourite stores via the Giving Machine website – Sainsburys, Tesco, Ebay, Amazon, John Lewis, M&S, Waitrose, Argos, Next, Boots, Debenhams, Asos, Holland & Barratt, Virgin Holidays, Thomas Cook, Butlins, Holiday Extras, Premier Inn, Apple Store, Nintendo, Sports Direct, Jessops, Joules, London Zoo, Ugg Australia, Hobbycraft, Co-op Insurance, Dell, Radisson Hotels, Madame Tussauds, EasyJet, GAP, Toys R Us, ELC, Mothercare, iTunes, Staples, Disney Land Resort.....and hundreds more!!!!

Stamptastic



The replacement for traditional name tags and raise money for the PTA with every order.

No more sewing or ironing on labels, no more losing your pencil case or P.E. kit! Stamptastic offer a personalised stamp-based naming solution that can be used on fabric, metal, wood & some plastics. A parent found Stamptastic online and passed the information to the PTA as any order placed will result in a percentage being paid back to the PTA funds.

Please have a look on their website at <http://www.stamptastic.co.uk/> and if you would like to make an order quote "HU14 3NE" in the "Gift card, PTA code, or discount code" box in the payment section when completing your order.

PTA COMMITTEE:



CHAIR:
CHRIS HUSCROFT

VICE CHAIR:
HANNAH STEPHENSON



SECRETARY:
MONICA FARR
monicajwilliams@hotmail.com

TREASURER:
KEELEY KNAGGS



PTA CLASS REPS:

RCM	Claire Walmsley	Helene Hart		
RHM	Vicky Innes	Sarah Baum		
1RP	Stuart Farmer	Laura Miskin	Suzanne Welburn	Laura Farmer
1JS/EJ	Vicky Innes	Claire Beckett	Helen Smith	Linsey Wainman
2JP	Linzy Settle	Lynda Ferguson		
2EE	Tracy Lee			
3SP	Linzy Settle			
3GW	Dan Crook	Helene Hart	Neil Redman	
4MR	Matt Bradbury	Jessica Devine	Caroline Graves	
4KC	Lynda Ferguson			
5SM				
5ND/RC				
6AN	Fiona Brown	Jessica Devine	Caroline Graves	
6KG	Lucy North			
STAFF	Sally Patrick			

JOIN THE PTA

We encourage as many parents as possible to get in touch and get involved. You may wish to join the PTA committee or, if you feel you don't have time for that, you can become one of our volunteers.

Without wonderful parent volunteers like you, our events wouldn't be possible

We need at least one or two YEAR 5 parents to join us.

DONATIONS

Donations are voluntary.

We give the option for you to donate to the PTA. We suggest one annual donation of £25 per family. Others may choose to give a small amount monthly. Ask for a Standing Order form if you are interested and please include Gift Aid if you are a tax payer.

~ THANK YOU ~

Thank you to the families that have already kindly donated.

For any information or interest in the PTA, please contact our PTA secretary

monicajwilliams@hotmail.com



Swanland School PTA

Please find us on Facebook and press 'Join Group'



Follow us on Twitter.